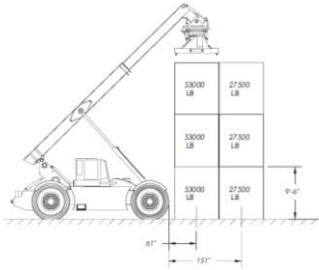


## RT240 Rough Terrain Container Handler (RTCH)



### Independent RT240 RTCH

The 56,000lb (25,400kg) capacity RT240 RTCH is the DOD's Expeditionary Logistics Enabler  
 Operated by USMC, USN, DLA, US Army, 6 international partners, and commercial service  
 Over 1,325 in service, over 220 mid-life rebuilds performed by the OEM, small business owned and operated  
 Version 4 is OEM's current production run: overcomes obsolescence and provides modernized capability  
 An EPA Tier III engine available for military specifications only

#### Specifications

Max Lift Ht: 33' 8" (10,300 mm)	Max Reach: 20' 7" (6,273 mm)
OAL: 33' 6" (10,210 mm)	OAW: 12' (3,657 mm)
Height: 13' 2" operating (4,014 mm)	Height: 9' 10" transport (2,998 mm)
Empty WT: 118,500lbs (53,750kg)	Cummins 6 cyl, TIER III (mil) or IV (comm), diesel engine
ZF 4F/3R transmission	4 wheel and 2 wheel drive
32.5' turn radius	4 wheel / 2 wheel / crab steering
Travel speed: 23/15 mph un/loaded (37 km/h, 24 km/h)	
Gradeability: 27% loaded/unloaded	Fording Depth: 3' (914 mm)
<b>Work Tools:</b>	
Container handler: 56,000lb (25,400kg) Capacity	
Four Point Sling rated to 40,000 lbs (18,143 kg)	
Optional Sling Attachment rated to 48,000lbs (21,770 kg)	
Optional Fork Lift Attachment rated to 44,000lbs	

Operator and maintenance training available at customer location  
 1 Year Warranty Standard  
 Service plans available to fit requirements

For more information, please visit [www.irtc-tx.com](http://www.irtc-tx.com)

Or contact Independent Customer Solutions at 210-240-8872

**Independent RT Center—a proven Small Business Performer**

Independent Rough Terrain Center LLC 210-599-6541  
 103 Guadalupe Drive 210-599-4009 fax  
 P.O. Box 1028 800-232-1236 toll free  
 Cibolo, Texas 78108-1028 210-599-3478 international



DUNS 123343027  
 CAGE 1NWX2  
 IRTC-TX.COM